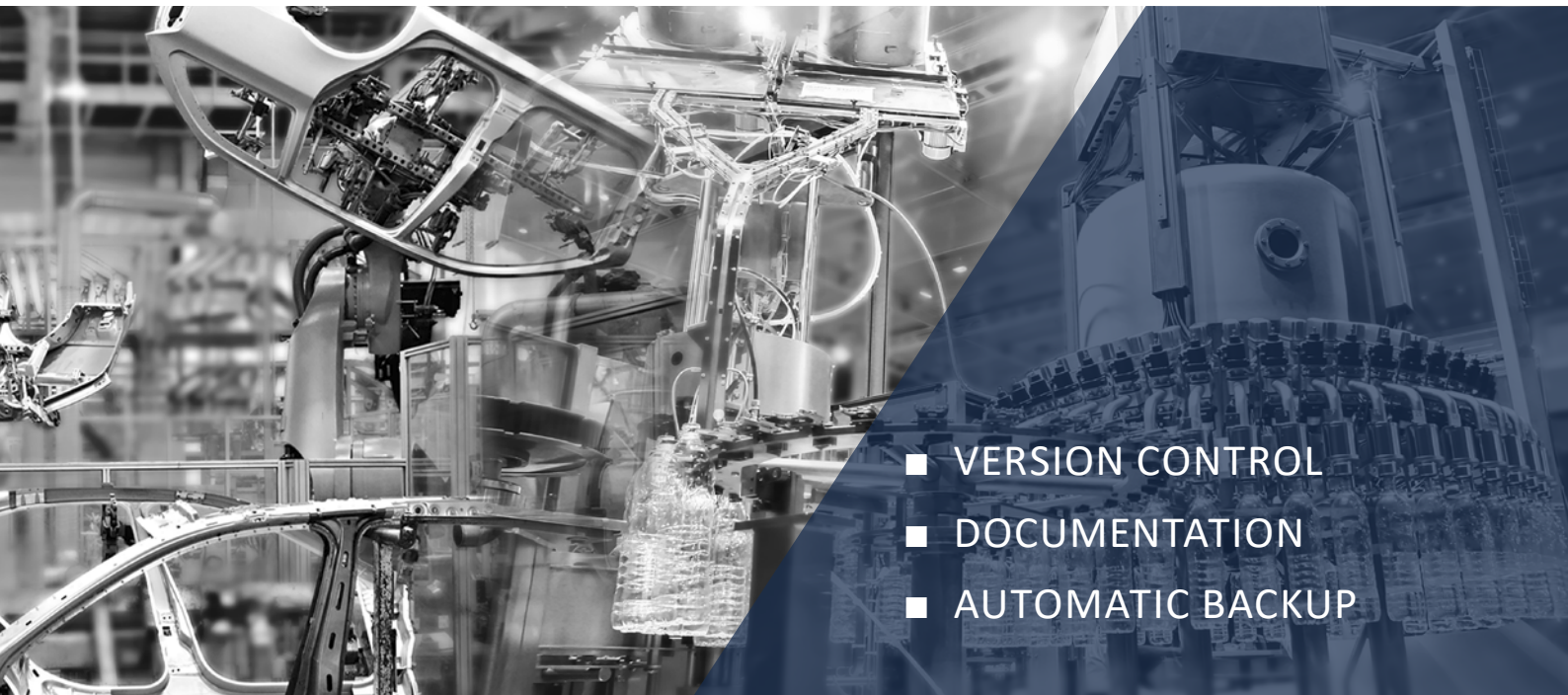


# Data management for industrial automation

Ensure clarity, certainty, and security



- VERSION CONTROL
- DOCUMENTATION
- AUTOMATIC BACKUP

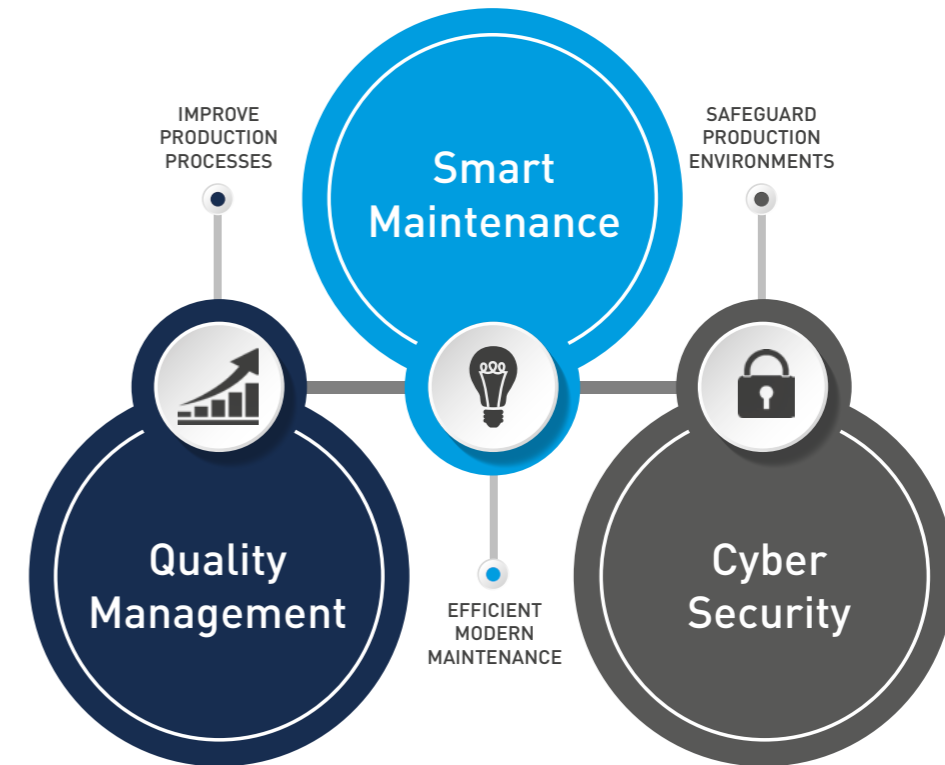




## THE CHALLENGES IN AUTOMATED PRODUCTION FACILITIES

- A large number of networked and non-networked devices and controllers need to be regularly backed up
- Continuity needs to be maintained across multiple shift changes
- Internal and external staff frequently make changes to device programs while troubleshooting and optimising software programs, or when commissioning and modifying production lines; these changes need to be traceable
- Manual changes to a wide variety of programmable devices need to be properly documented and made centrally available
- Setpoints and parameters need to be both continually monitored for changes and easily restorable

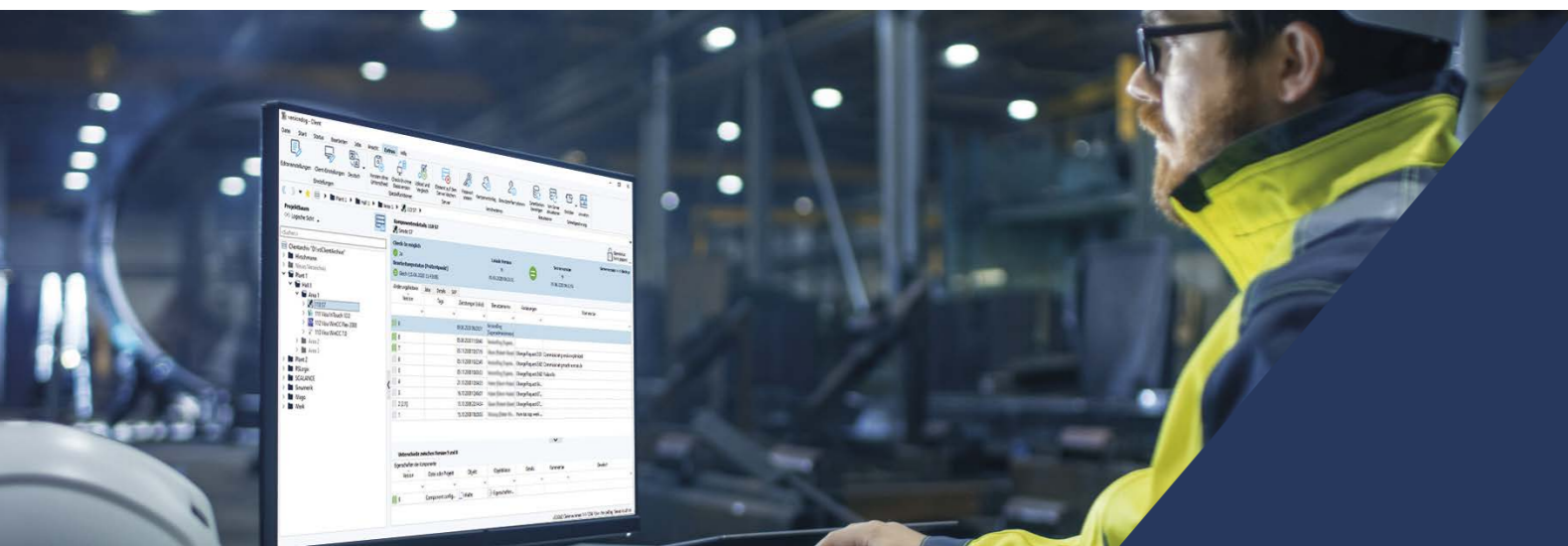
## THE FUTURE OF MAINTENANCE



### Your manufacturer-independent data management solution: versiondog!

AUVESY's versiondog software offers customers the solution they need. versiondog is designed to work with the full range of automation devices and equipment commonly in use today and is not tied

to any single manufacturer. As newer products become more established action is taken to ensure that the necessary comparators are made available to users.



### VERSION CONTROL

- Standardised management of all changes to control programs
- Analysis and traceability of changes using graphical, tabular or text-based version comparisons
- Changes displayed clearly and comprehensibly
- Fast disaster recovery



### DOCUMENTATION

- Integrated support for documentation
- Data organised with 100% clarity and transparency
- Clear presentation of complete change history
- Audit trail reports at the click of a button



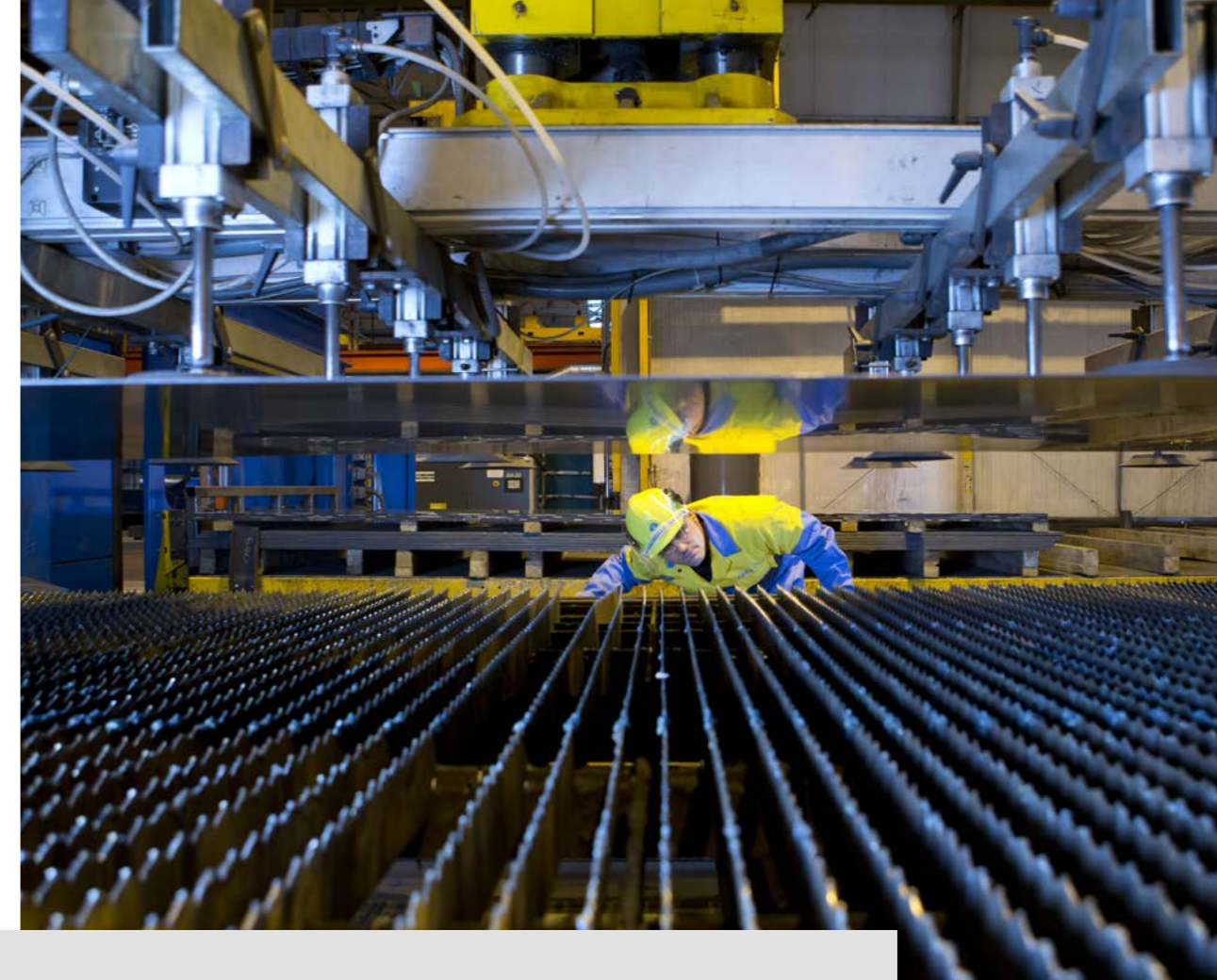
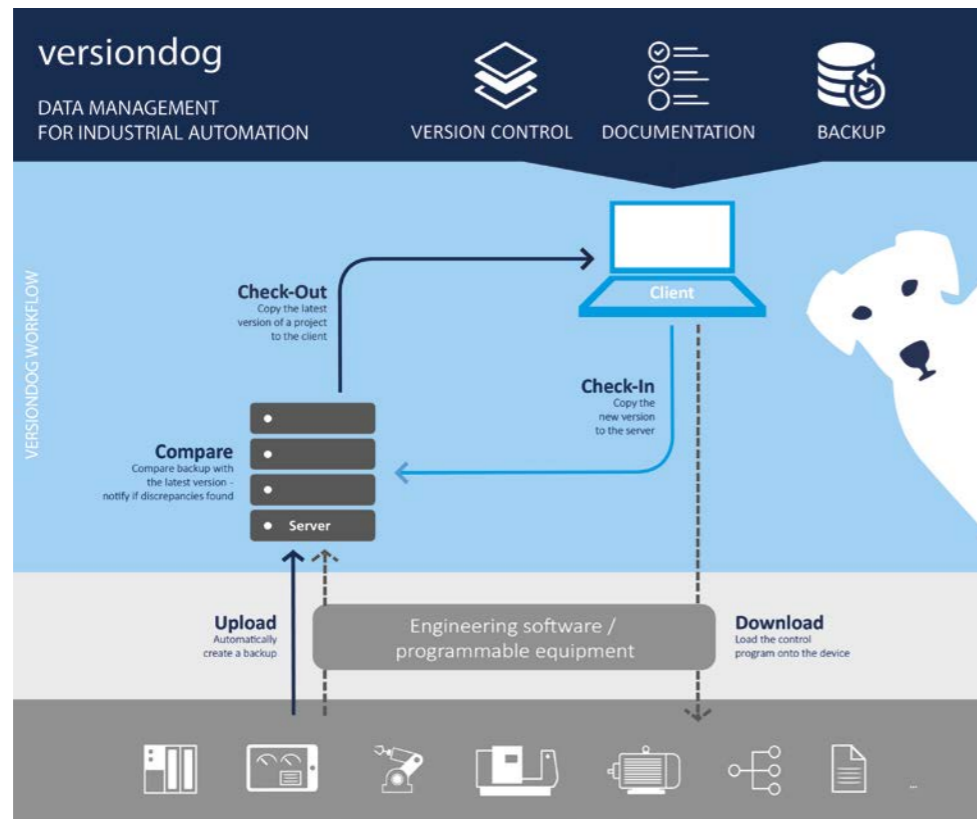
### AUTOMATIC BACKUP

- Fully safeguarded data and significant time savings
- Regular automatic comparisons
- Alarm when discrepancies are found
- One backup strategy for networked and non-networked devices

## AUTOMATED DATA MANAGEMENT

versiondog analyses the data and programs of many different automation manufacturers. Its automated functions help deal with the flood of data and versions in any production environment. versiondog not only manages data centrally, it also monitors and analyses changes in device software.

That includes changes made by external contractors. And synchronisation between versiondog servers at different sites enables the distribution and monitoring of company-wide standard programming elements.



### Maintenance made easy

” With versiondog, we always know the current status of our production plants. versiondog makes our work easier, saves us time and gives us end-to-end clarity on what changes have been made. You can't get better quality than that!

*Hassan El Haddad, technical automation specialist at HTD, Tata Steel Europe*



© Tata Steel Europe

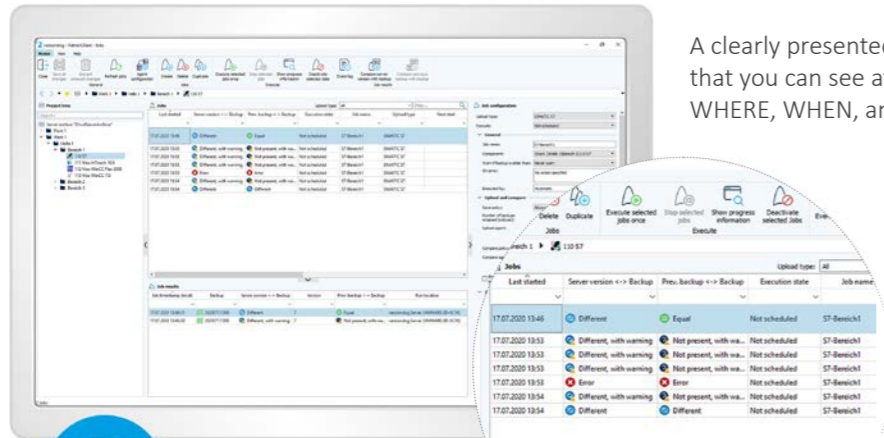
## YOUR VERSIONDOG ADVANTAGE – MORE CERTAINTY, CLARITY AND SECURITY

- Identify unauthorised program changes immediately
- Generate change records quickly and easily (for audits, etc.)
- Quickly find the right data needed for disaster recovery
- Simplify coordination and management of external contractors
- Coordinate personnel through user and access management

## AUTOMATIC BACKUP

versiondog not only runs regular automated backups, it can even make detailed comparisons between the online program and the offline project. That means you can be certain that your automa-

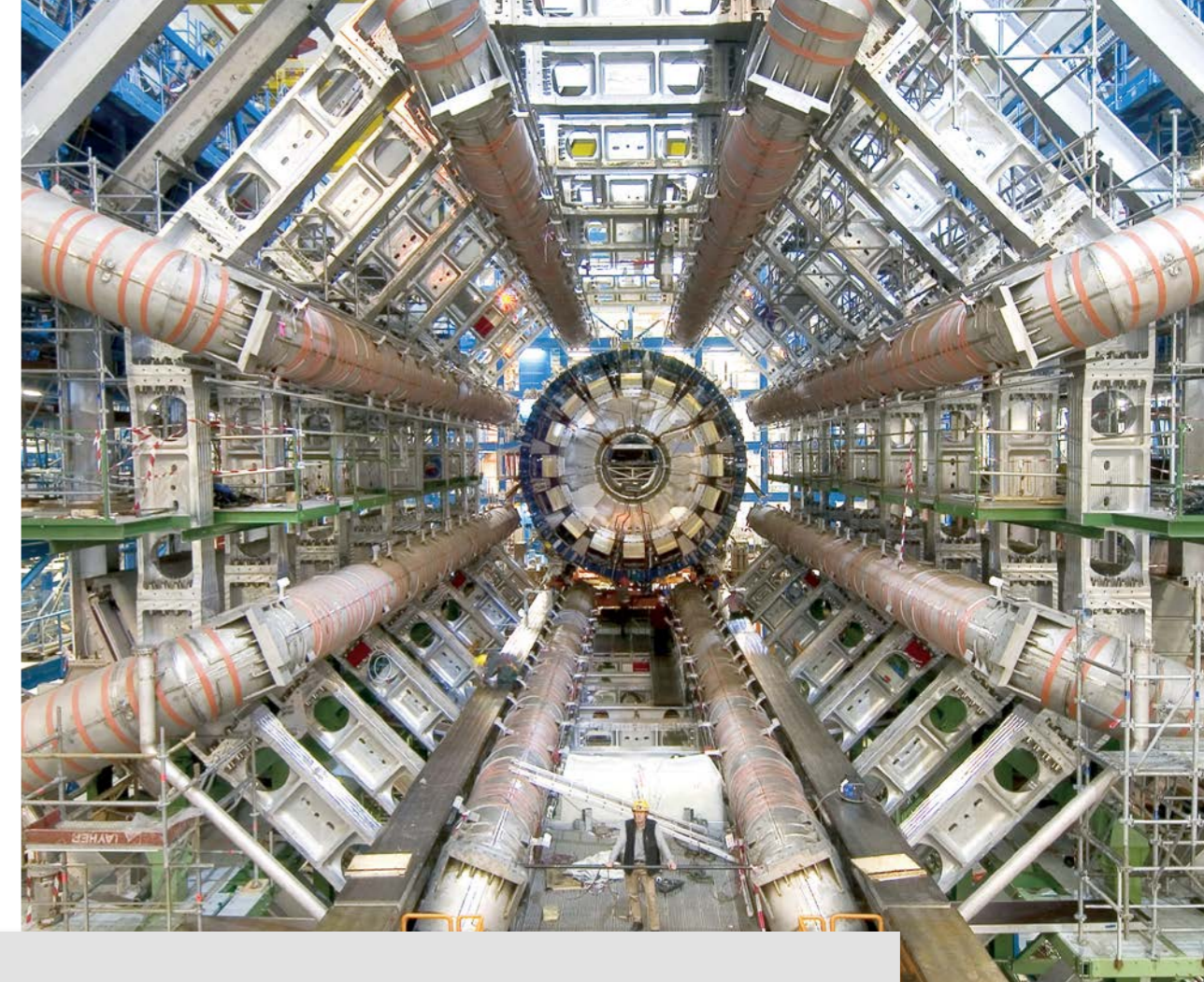
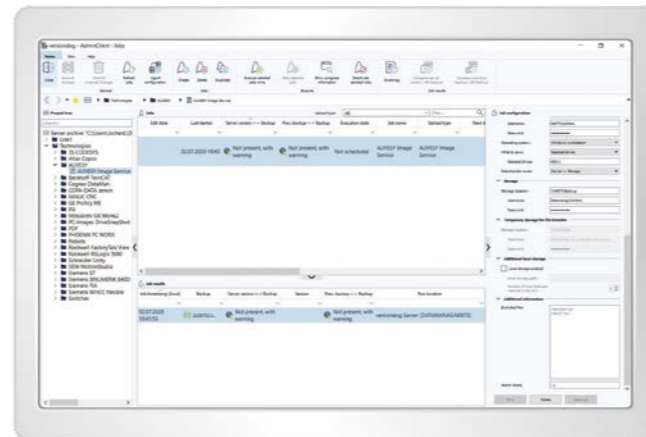
ted device programs are current and correct. You always know exactly what version is running in production, and setpoints and parameters can be checked and restored if necessary at any time.



A clearly presented complete change history means that you can see at a glance WHO changed WHAT, WHERE, WHEN, and WHY.



The versiondog job configuration function can be used for the purpose of monitoring and/or backup, which can be carried out manually or executed according to a schedule.



versiondog ensures certainty

” With versiondog we have made significant gains in safety and quality in terms of the data availability of our applications with many of CERN’s programmable logic controllers.

*Jerónimo Ortola Vidal, automation engineer at the Industrial Controls and Safety Systems Group at CERN*



© CERN



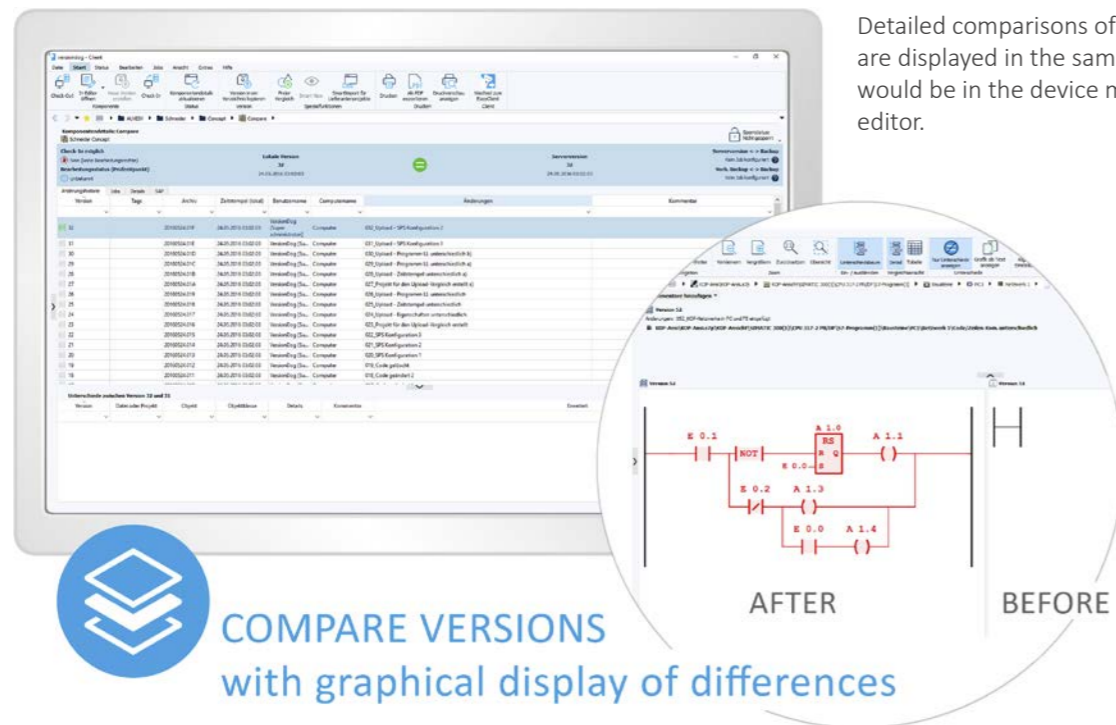
# 84 %

of our customers agree, that they save time with versiondog!\*

\* Source: Customer survey 2018–2020

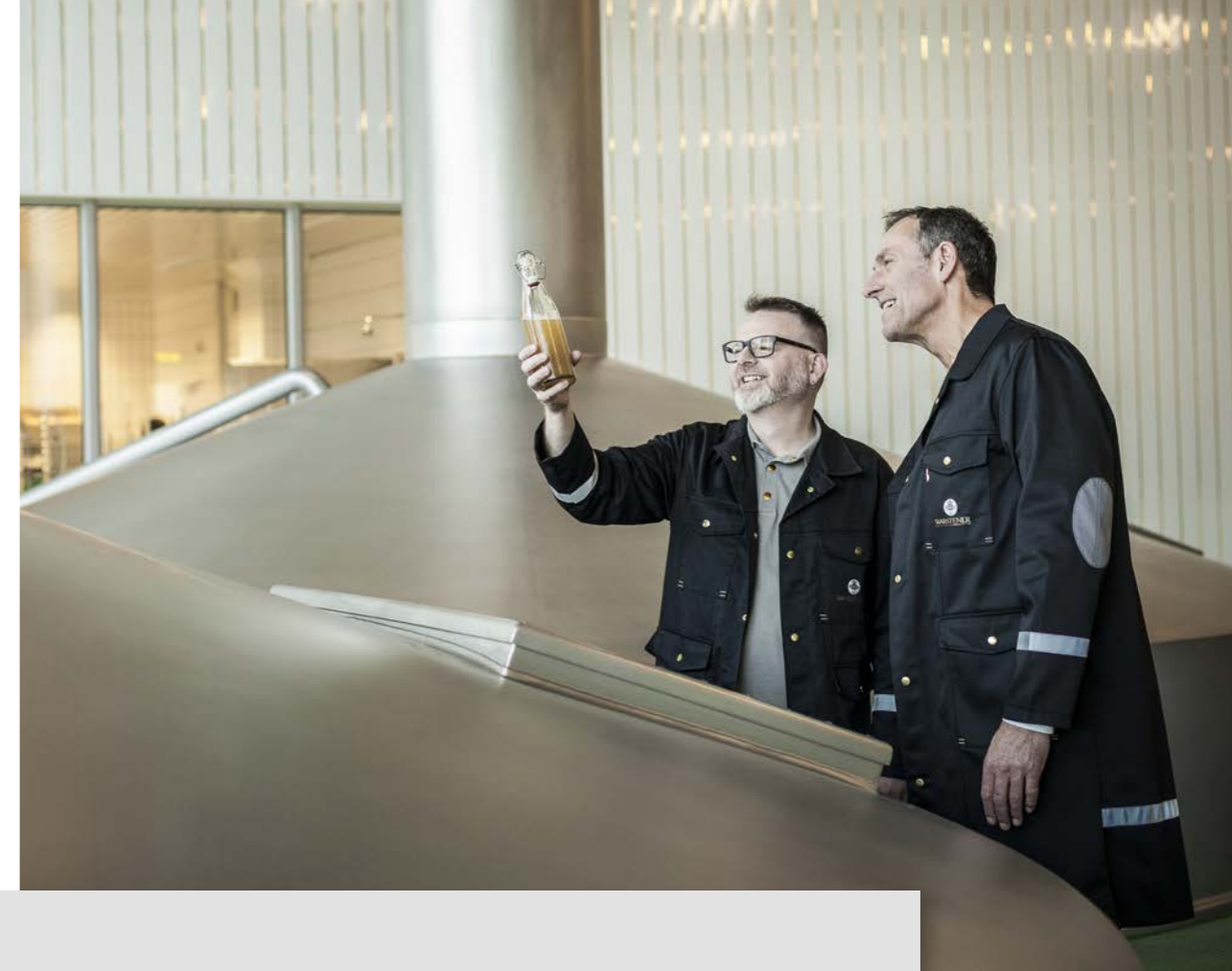
## CHANGE MANAGEMENT: DETECT DIFFERENCES AND CREATE VERSIONS

With versiondog SmartCompare it only takes a few clicks to get a detailed comparison of any two versions, and an easy-to-understand analysis of differences. It can even display the results of a comparison graphically and in the same familiar way as the editor.



Detailed comparisons of project changes are displayed in the same way as they would be in the device manufacturer's editor.

**COMPARE VERSIONS**  
with graphical display of differences



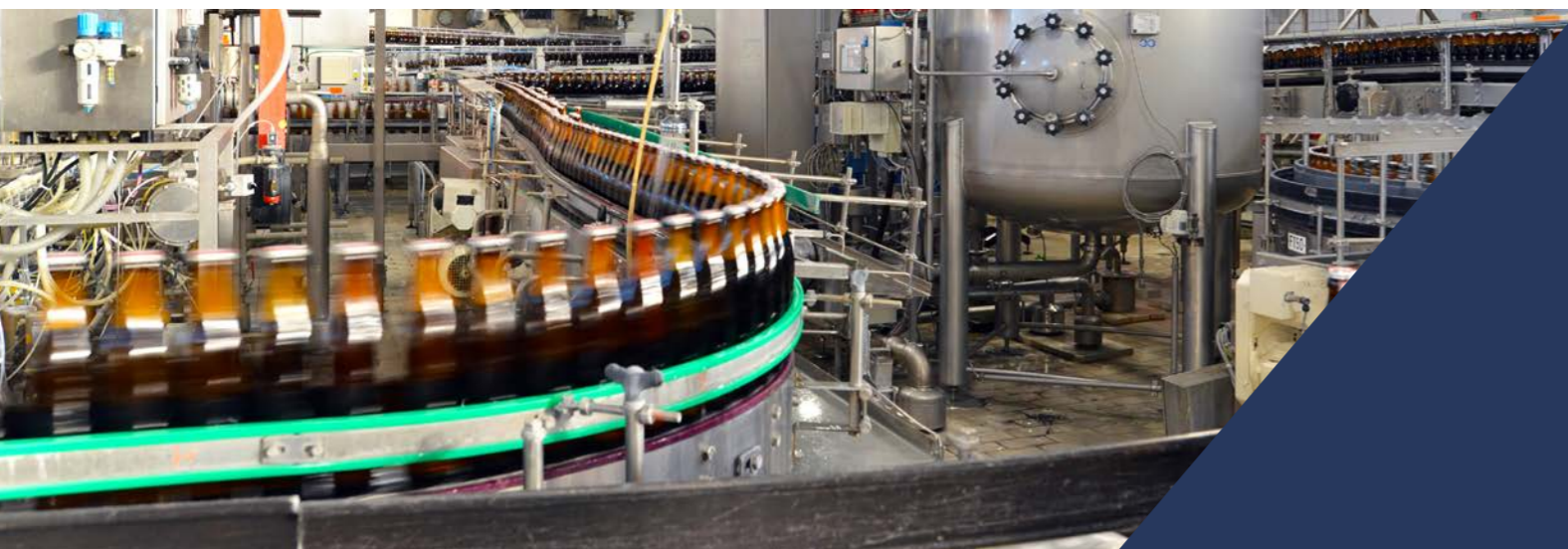
Maintain clarity amidst the flood of data and program versions



” Thanks to versiondog, we are able to rapidly locate errors and get the plant back up and running again. The wonderful thing about versiondog is that fact that you know exactly when a particular change was made, who made it, and why it was made.

*Dipl. Ing. Thomas Wenthaus works at the Warsteiner Brewery in the operative engineering department*

© Warsteiner Brauerei



## YOUR VERSIONDOG ADVANTAGE – QUALITY IMPROVEMENT

- Track all changes to programs and data in use in production and quickly comprehend the reasons for them (right back to the base version)
- Quickly find and restore an error-free version
- Smooth and optimise your daily workflow
- Reduce wastage by closely monitoring quality-relevant setpoints and parameters

## PREDICTIVE MAINTENANCE WITH VERSIONDOG

The versiondog Factory Floor Status feature is our innovative solution that will help you keep on top of maintenance. The web-based add-on provides a comprehensive overview of devices, including MLFB overview, firmware versions, hardware

serial numbers, cycle times, battery status, back-up results, and much more. The search function helps you to quickly perform analyses and compile reports.



In addition to a detailed overview of all devices and equipment that are integrated into the versiondog system, Factory Floor Status also includes a job statistics report which displays graphical analyses of the results of back-up jobs. This makes it easier to keep track of KPIs.



Automation department at aluminium producer ALUAR trusts in versiondog



” In my opinion, the greatest benefit that working with versiondog brings is that it gives us the chance to take our best practices to the next level, allowing us to keep our repository structure in order, review changes quickly and efficiently, lock components to avoid conflicting versions, all this while reducing considerably the management effort. Naturally, machine safety and dependability is greatly benefited as a result of this.

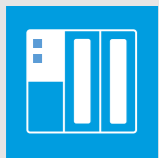
*Federico Ares, Automation Project Engineer bei Aluar*

© Aluar

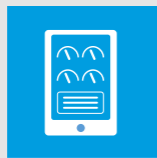


## YOUR VERSIONDOG ADVANTAGE – COST REDUCTION

- Cut the duration of downtime or avoid it altogether
- Reduce lost production and wastage
- Improve efficiency when commissioning new production lines
- Save time with automated backups and documentation and by being able to spot errors quickly and easily



- AEG
- B&R
- BECKHOFF
- BOSCH
- CODESYS
- EATON
- ELAU
- GE
- Mitsubishi
- Phoenix Contact
- Rockwell
- Schneider Electric
- Siemens
- WAGO
- ...



- ABB
- AVEVA
- COPA-DATA
- GE
- Rockwell Automation
- Schneider Electric
- Siemens
- ...



- ABB
- COMAU
- FANUC
- Kawasaki
- KUKA
- MITSUBISHI
- OMRON Adept
- Stäubli
- YASKAWA MOTOMAN
- ...



- Adobe PDF
- ASCII
- Binary
- CSV
- FTP
- Microsoft Excel
- Microsoft Word
- Netzwerk (UNC)
- SSH
- XML
- ...

Manufacturer-independent device support (versiondog 8.1.5)

## OPTIMISED FOR YOUR AUTOMATION SYSTEMS AND DATA

Use a single strategy to safeguard all automation system project data and other data types. Track changes and compare versions in detail. Backup device data automatically. Perform disaster recovery faster and with confidence.

A helpful and knowledgeable in-house support team is there to give individual assistance with the details of integrating various different devices into

the system. Flexibility regarding further development and required features is also assured. The AUVESY Academy is the best way to find out everything you need to know to make versiondog work for you in a way that optimally suits your requirements. Our qualified team of professional versiondog trainers will teach you step-by-step how to use it to its best advantage.



## No more searching for software

” At Mann + Hummel, versiondog has now become such an important tool that the trainees now use it too. Education and a high level of knowledge are key factors in ensuring good maintenance.

*Klaus Wanninger, responsible for electrical maintenance at Mann + Hummel*



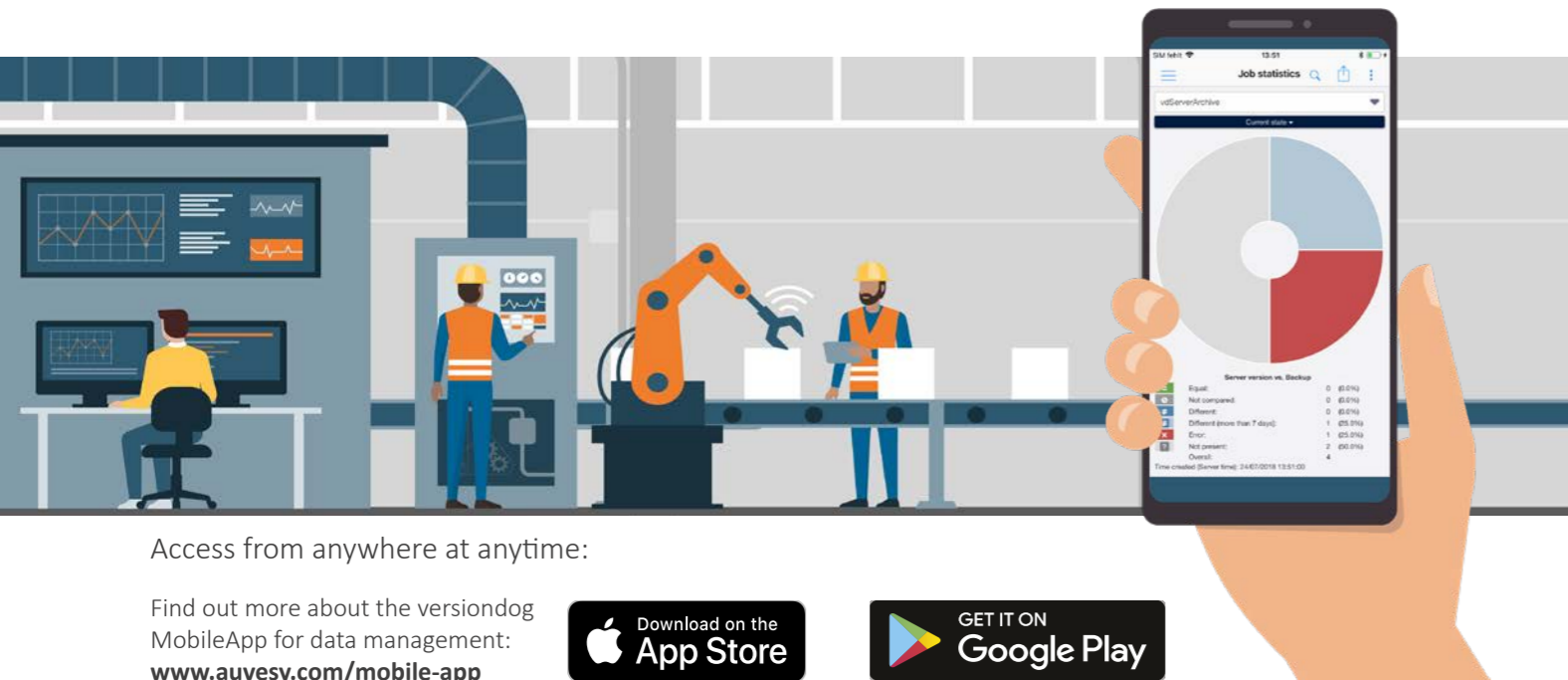
© Mann + Hummel Filterwerk GmbH



# 96 %

of customers have said that they would recommend versiondog!\*

\* Source: Customer survey 2018–2020



Access from anywhere at anytime:

Find out more about the versiondog MobileApp for data management:  
[www.auvesy.com/mobile-app](http://www.auvesy.com/mobile-app)



### DATA TRACEABILITY WITH VERSIONDOG – YOUR KEY TO IIOT

At the dawn of the Industrial Internet of Things, we are already seeing the beginnings of exponential increases in software complexity and data volume. Without a suitable automated data management system, companies are likely to be overwhelmed by developments. versiondog has for many years been helping manufacturers

minimise risk when making changes. You can always rollback if something goes wrong. There are many changes that will need to be made on the road to IIoT. Some large, some small. versiondog is ready to help you maximise benefit by minimising risk as you make the transformation.



### IT security for critical infrastructure



” We want to connect every installation to the versiondog system, even those that are right next door. The installations are organised in a hierarchical structure, which is clearly reflected in the versiondog software. With staff numbers limited, this helps guarantee support at all sites and keep precise track of all changes.

*Ralf Hellmann & Arnes Hadzic at Emschergenossenschaft/ Lippeverband*

© Emschergenossenschaft/ Lippeverband



### OUR CLIENT BASE SPEAKS FOR ITSELF:

- |                         |                 |                  |                        |                    |                    |
|-------------------------|-----------------|------------------|------------------------|--------------------|--------------------|
| Anglo American Platinum | ArcelorMittal   | Audi             | Bayer                  | Bitburger          | BMW                |
| Bosch                   | Brose           | Caterpillar      | Coca-Cola              | Continental        | Copenhagen Airport |
| CSL Behring             | Daimler         | Dürr             | Ford                   | Fresenius          | GlaxoSmithKline    |
| GM                      | Hamburger Hafen | Heineken         | Kraft Foods            | Mars               | Munich Airport     |
| Pirelli                 | Porsche         | Procter & Gamble | Roche Diagnostics      | Schaeffler         | STIHL              |
| ThyssenKrupp            | Unilever        | Volkswagen Group | Xellia Pharmaceuticals | ZF Friedrichshafen |                    |



## About AUVESY

AUVESY GmbH ([www.auvesy.com](http://www.auvesy.com)), founded in 2007, is a leading global provider of vendor-independent version control and change management software for automated production. With its software "versiondog", AUVESY offers a product that provides industrial companies with uniform central data storage, fully automatic data backup, version management with detailed change detection and clear documentation, while at the same time being highly user-friendly and adapted to the automation systems of various manufacturers. AUVESY software is already used in more than 40 countries worldwide in a variety of different branches. The company, based in Landau in the Palatinate region of Germany, employs around 90 people.



HEADQUARTER GERMANY

AUVESY GmbH  
Fichtenstraße 38 B  
76829 Landau in der Pfalz

Phone +49 6341 6810-300  
Fax +49 6341 6810-311  
Email [info@auvesy.de](mailto:info@auvesy.de)  
Web [www.auvesy.de](http://www.auvesy.de)



OFFICE USA

AUVESY INC  
146 Monroe Center St NW  
Suite 1210  
MI 49503 Grand Rapids

Phone +1-616.888.3770  
Fax +1-616.888.3769  
Email [info@auvesy.com](mailto:info@auvesy.com)  
Web [www.auvesy.us](http://www.auvesy.us)



OFFICE CHINA

AUVESY Data Management  
Solutions Co., Ltd.  
Jinma Lu 3, Maqun, Qixia District, Nanjing  
China

Fax +86 25 85725003  
Email [info@auvesy.cn](mailto:info@auvesy.cn)  
Web [www.auvesy.cn](http://www.auvesy.cn)



# AUVESY.